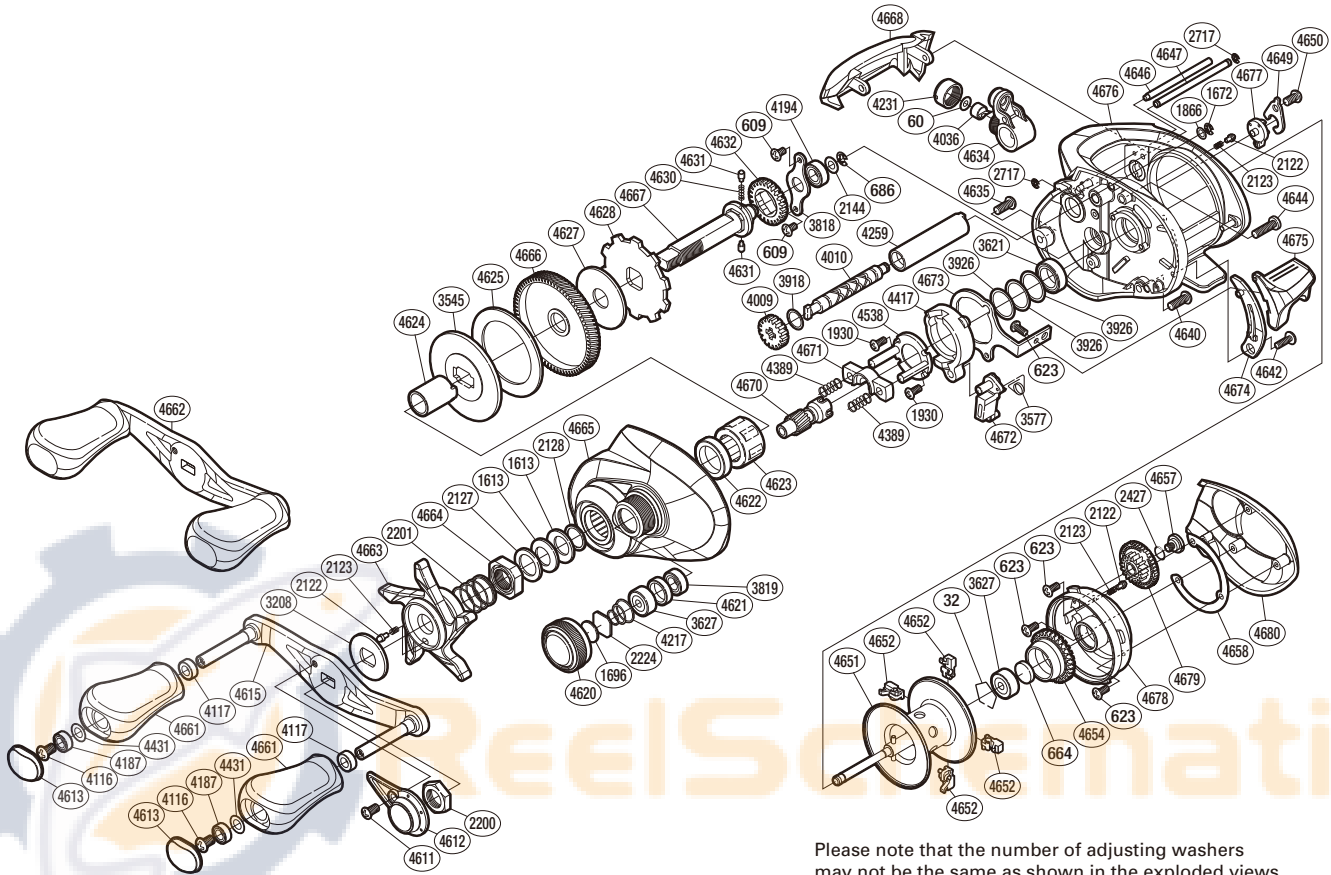


SHIMANO

CHRONARCH C14+ S A-RB

CH-CI4+151



Please note that the number of adjusting washers may not be the same as shown in the exploded views. (Adjustment will vary with each individual product.)

(51RH299151U)

Part No.	Description	Part No.	Description	Part No.	Description
BNT0032	Bearing Retainer	BNT4036	Line Guide Pawl	BNT4646	Stabilizer Bar
BNT0060	Spacer	BNT4116	Screw	BNT4647	Line Guard
BNT0609	Screw	BNT4117	Handle Knob Bushing	BNT4649	Cam Lever Retainer
BNT0623	Screw	BNT4187	Ball Bearing	BNT4650	Screw
BNT0664	Spacer B	BNT4194	Ball Bearing	BNT4651	Spool Assembly
BNT0686	E Lock	BNT4217	Spool Tension Spring	BNT4652	Brake Shoe
BNT1613	Drag Spring Washer	BNT4231	Pawl Cap	BNT4654	Brake Pipe Gear
BNT1672	E Lock	BNT4259	Level Wind Guard	BNT4657	Screw
BNT1696	Cast Control Spacer	BNT4389	Yoke Spring	BNT4658	Brake Case Adjusting Washer
BNT1866	Washer	BNT4417	Clutch Cam	BNT4661	Handle Knob
BNT1930	Screw	BNT4431	Washer	BNT4662	Handle Assembly
BNT2122	Click Pin	BNT4538	Clutch Cam Retainer	BNT4663	Star Drag
BNT2123	Click Spring	BNT4611	Screw	BNT4664	Star Drag Nut
BNT2127	Star Drag Spacer	BNT4612	Handle Retainer	BNT4665	Left Side Plate
BNT2128	Bearing Washer	BNT4613	Handle Knob Seal	BNT4666	Drive Gear
BNT2144	Washer	BNT4615	Handle Shank Assembly	BNT4667	Drive Shaft
BNT2200	Handle Nut	BNT4620	Cast Control Cap	BNT4668	Level Wind Protector
BNT2201	Star Drag Spring	BNT4621	Bearing Spacer	BNT4670	Pinion Gear
BNT2224	Spool Tension Spacer	BNT4622	Drive Shaft Holder Bushing	BNT4671	Yoke
BNT2427	O Ring	BNT4623	Roller Clutch Bearing	BNT4672	Clutch Pawl
BNT2717	E Lock	BNT4624	Roller Clutch Inner Tube	BNT4673	Clutch Plate
BNT3208	Star Drag Click Plate	BNT4625	Drag Washer	BNT4674	Clutch Bar Guide
BNT3545	Key Washer	BNT4627	Drag Washer	BNT4675	Quick-Fire II Clutch Bar
BNT3577	Clutch Pawl Spring	BNT4628	Anti-Reverse Ratchet	BNT4676	One-Piece Frame
BNT3621	Ball Bearing	BNT4630	Idle Gear Spring	BNT4677	Side Plate Cam Lever
BNT3627	Ball Bearing	BNT4631	Idle Gear Pin	BNT4678	Brake Case
BNT3818	Drive Shaft Retainer	BNT4632	Idle Gear	BNT4679	BR Dial
BNT3819	Ball Bearing	BNT4634	Line Guide	BNT4680	Right Side Plate
BNT3918	Washer	BNT4635	Screw		
BNT3926	Washer	BNT4640	Screw		
BNT4009	Idle Gear	BNT4642	Screw		
BNT4010	Worm Shaft	BNT4644	Screw	BNT4692	B-100 Oil (accessory)